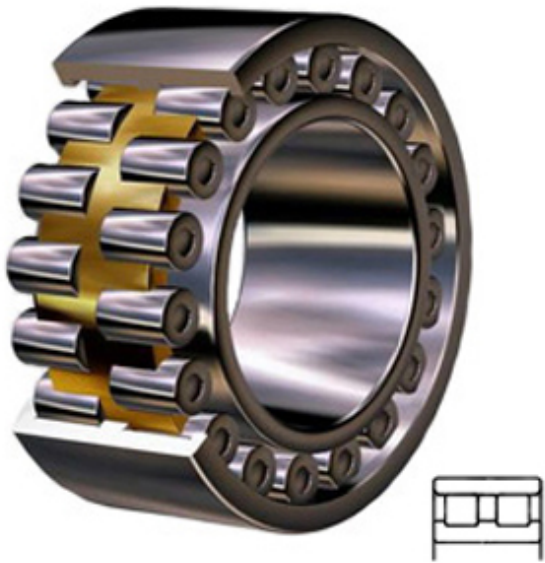




ROLLWAY BEARING Sales Co., Ltd.



1.575 Inch | 40 Millimeter x 2.677 Inch | 68
 Millimeter x 0.827 Inch | 21 Millimeter NACHI
 NN3008M2KC9NAP4 Cylindrical Roller Bearings

Bearing No. NN3008M2KC9NAP4

NN3008M2KC9NAP4 Bearing 2D drawings and 3D
 CAD models

Category	Cylindrical Roller Bearings
Inventory	0.0
Manufacturer Name	NACHI
Minimum Buy Quantity	N/A
Weight	0.313
EAN	4991893385489
Product Group	B04270
Bore Profile	Tapered
Cage Material	Bronze
Precision Class	ABEC 7 ISO P4
Number of Rows of Rollers	Double Row
Separable	Outer Ring - Both Sides
Rolling Element	Cylindrical Roller Bearing
Profile	Complete with Outer and Inner Ring
Snap Ring	No
Internal Clearance	C9NA
Retainer	Yes
Relubricatable	Yes
Inch - Metric	Metric
Other Features	3 Rib Inner Ring Plain Outer Ring Cage on Inner Ring OD
Long Description	40MM Bore; Tapered Bore Profile; 68MM Outside Diameter; 21MM Width;



ROLLWAY BEARING Sales Co., Ltd.

	Bronze Cage Material; ABEC 7 ISO P4; Double Row; Outer Ring - Both Sides Separable; No Snap Ring; Relubricatable; C9NA Internal C
Category	Cylindrical Roller Bearing
UNSPSC	31171547
Harmonized Tariff Code	8482.50.00.00
Noun	Bearing
Manufacturer URL	http://www.nachi.com
Manufacturer Item Number	NN3008M2KC9NAP4
Weight / LBS	0.69
B	0.827 Inch 21 Millimeter
d	1.575 Inch 40 Millimeter
D	2.677 Inch 68 Millimeter